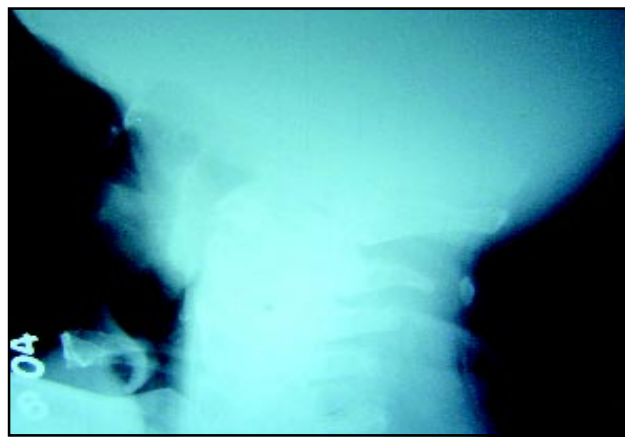
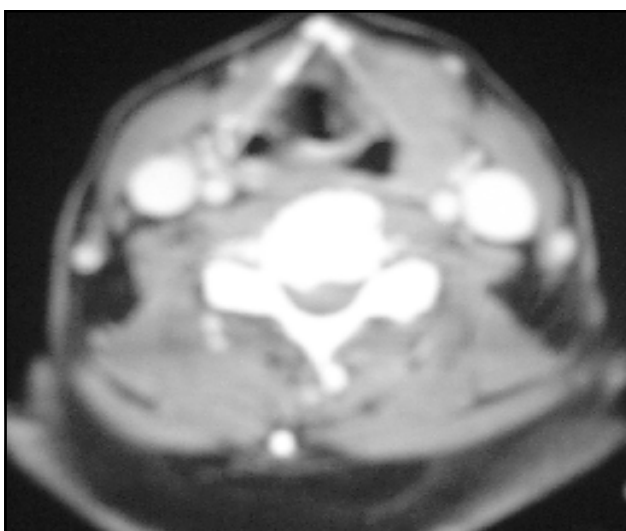
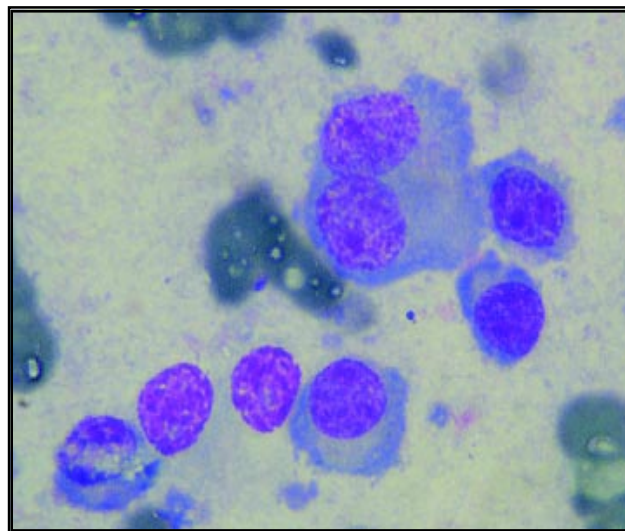


Images in Clinical Oncology

Extramedullary Plasmacytoma

**a****b****c****d**

A 62 year old male had undergone autologous stem cell transplantation for multiple myeloma 4 years back. He presented with swelling left side of neck (Fig. a) with hoarseness of voice of 2 weeks duration. Indirect laryngoscopy showed left vocal cord paralysis. Plain X-ray of the neck revealed destruction of left thyroid cartilage (Fig. b) and CT scan of the neck showed soft tissue mass eroding the left thyroid and arytenoids cartilage and infiltrating the left vocal cord (Fig. c). FNAC of the swelling revealed presence of plasma cells with eccentric nucleus and basophilic cytoplasm. A binucleated plasma cell is also seen (leishman 100X) (Fig. d). Bone marrow examination was normal. A diagnosis of extramedullary relapse of multiple myeloma was made.

Rajesh Kashyap & Ritu Gupta
Department of Hematology
Sanjay Gandhi Postgraduate Institute of Medical Sciences Lucknow
Email : rajkashyapmd@yahoo.co.in