

Primary mediastinal seminoma; resistance and relapse: An aggressive entity

Ankita Nachankar,
Rahul Krishnatry, Amit Joshi¹,
Vanita Noronha¹,
Jai Prakash Agarwal

Departments of Radiation
Oncology and ¹Medical Oncology,
Tata Memorial Hospital,
Mumbai, Maharashtra, India

Address for correspondence:

Dr. Jai Prakash Agarwal,
Department of Radiation Oncology,
Tata Memorial Hospital,
Dr. E Borges Road, Parel,
Mumbai - 400 012, Maharashtra, India.
E-mail: agarwaljp@tmc.gov.in

ABSTRACT

Seminoma is one of the most radio and chemo sensitive tumors. Aggressive variant of primary mediastinal seminoma (PMS) are rarely described in the literature. We here discuss an interesting case of young male (22 years) presenting with superior vena cava syndrome due to PMS that showed poor response to conventional platinum based chemotherapy and radiotherapy. Furthermore, with a short disease free interval (one year) relapsed at unusual sites of bone and soft-tissue deposits in check. This emphasizes the importance of identifying methods to pre-screen such aggressive variants for more effective treatment options.

Key words: Bone metastasis, chemoresistance, extra-gonadal germ cell tumor, mediastinal seminoma, radio-resistance, soft-tissue metastasis

INTRODUCTION

The primary mediastinal seminoma (PMS) is a rare tumor. Usually, these tumors are slow growing and have limited potential to metastasis.^[1] This report presents a rare case of PMS with several rare and interesting features. This includes younger age of presentation, placental alkaline phosphatase (PLAP) negative seminoma, chemo (cisplatin based) and radio-resistance, and unusual sites of metastasis at recurrence. Bone metastasis is a rare occurrence with seminoma while the presence of soft-tissue metastasis is yet to be described in association with PMS.

CASE REPORT

A 22-year-old male presented with a history of progressive dyspnea, cough, hoarseness of voice, and unquantified weight loss for the last 6 months in Feb 2010. On clinical examination, there were signs of superior vena cava syndrome, with 5 cm × 6 cm

left supraclavicular mass. The whole body computed tomography (CT) scan showed heterogeneously enhancing 12 cm × 8.2 cm × 4.2 cm firm soft-tissue mass in the mediastinum encasing ascending aorta, arch of aorta, right main pulmonary artery, and proximal bronchi, infiltrating superior vena cava [Figure 1]. The ultrasound of scrotum was unremarkable. The biopsy of left supraclavicular mass was consistent for extragonadal seminoma with immunohistochemistry positive for C-kit and negative for leucocyte common antigen, epithelial membrane antigen and PLAP. The serum lactate dehydrogenase (LDH) was raised to 1963 U/L (normal range 100-190 U/L) while β-human chorionic gonadotropin (β-HCG < 1.20 mIU/ml) and alpha fetoprotein AFP (2.73 ng/ml) were normal. The baseline complete blood counts, renal and liver function tests were found to be normal.

The patient received chemotherapy comprising of bleomycin, etoposide, and cisplatin (BEP; Bleomycin 18 U/m² IV, Etoposide 100 mg/m², Cisplatin 20 mg/m²) 3 weekly for four cycles until July 2010. The patient tolerated chemotherapy well with no dose reductions. There was a serial reduction in serum LDH values. The response assessment CT showed residual disease of 5.8 cm × 4 × 4 cm and elevated serum LDH of 221 U/L. To consolidate the partial response and vascular involvement precluding surgery; external beam radiation to a dose of 30 Gy in 17 fractions over 3 weeks was given to the mediastinum and supraclavicular region. The 6 MV

Access this article online

Quick Response Code:



Website:
www.ijmpo.org

DOI:
10.4103/0971-5851.125252

photons with the tomotherapy (high precision arc intensity modulated radiation with image guidance) were used to irradiate the planning target volume, which included clinical target volume (CTV) with a margin of 5 mm for set-up error. The CTV included gross residual tumor as seen on planning CT with 5 mm margin. The post-radiation positron emission tomography-CT (PET-CT) showed complete metabolic regression of the disease and the normal serum LDH. Patient was on regular follow-up with tumor markers and CT thorax abdomen pelvis every 3 monthly.

At 1 year patient presented with rapidly progressing right side cheek swelling (5 cm × 6 cm) and progressive lower backache. On examination, there was local tenderness in cheek swelling and in the region of 5th lumbar vertebrae. The CT showed a soft-tissue mass involving subcutaneous plane of right cheek of 6 cm × 6 cm × 4 cm [Figure 2]; increased size of mediastinal mass (10 cm × 8 cm × 6 cm) and multiple lytic lesions in ribs. The fine needle aspiration cytology from cheek swelling showed cells consistent with the metastatic seminoma collaborated with raised serum LDH values (353U/L). The serum β-HCG and AFP were normal. The technetium-99 m- methylene diphosphonate MDP bone scintigraphy revealed multiple metastases in ribs and 5th lumbar vertebra.

After discussion in institutional joint tumor board meeting keeping the view of disease status, poor performance status and patient wishes; he was offered short course palliative radiotherapy to right face and lumbar spine with the supportive care. Review after 4 weeks showed poor pain relief and progressive disease. Taking an overall view of patient performance status advanced disease, distant geographical location, challenged socio-economic status and discussions with the patient and family members;

further anti-neoplastic therapy was precluded and best supportive care was offered. Patient succumbed to progression of the disease shortly.

DISCUSSION

Primary extragonadal germ cell tumors (EGGCT) constitute a small subset of 2-5% of all germ cell tumors;^[1] and PMS include only 10% of EGGCT.^[1] In reported literature, PMS presents at a young age (median 33 years) with dyspnea, cough, fever, weight loss, and Superior vena cava obstruction SVCO symptoms in decreasing order.^[1] The current case is one of the rare PMS presenting at much younger age of 22 years with SVCO, which would equally contend for a diagnosis of lymphoma.

In one large series of EGGCT with over 600 patients, post-cisplatin based chemotherapy overall response rate was 92%, and refractoriness to cisplatin based chemotherapy was the most important factor associated with the poor outcomes. In PMS only two out of 25 patients showed viable tumor in residual mass post-chemotherapy. In this patient due to mediastinal great vessels invasion surgery was precluded; though radiation achieved a complete metabolic response of a very short duration. Another notable unusual feature was, that PET-CT after completion of treatment showed complete metabolic remission suggesting a possibility longer disease free survival contrary to that patient developed local relapse and distant failure in a very short period of time.^[2] Although, negative predictive value of PET-CT is reported to be 90% in literature the probability of missing residual disease, which recurred after a short interval of 1 year cannot be ignored.^[3] Hence, development of better follows-up strategies including introspection of (Fludeoxyglucose) FDG-PET to identify the relapse are required.^[4]



Figure 1: Computed tomography chest showing primary mediastinal seminoma with involvement of major vessels; especially invasion of superior vena cava

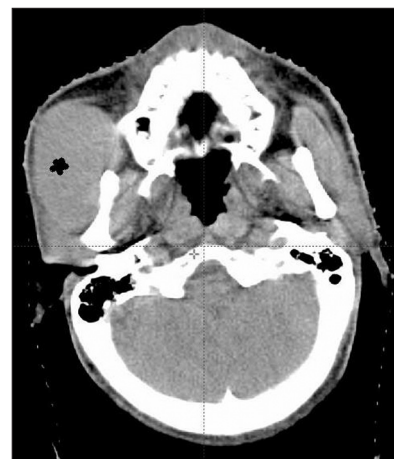


Figure 2: Computed tomography head neck showing soft-tissue deposit in cheek (*)

The recurrence after chemotherapy and radiotherapy in PMS has been rarely associated with malignant transformations to sarcomas. The exclusion of such an event would have been desirable with biopsy and immunohistochemistry marker but was excluded as per patient wishes and socio-economic issues.^[5] Although, the results of the second line chemotherapy especially with high-dose regimens with stem cell rescue have been encouraging in the literature recently; but were again excluded after considering patient and disease factors.^[6]

The most important aspect from clinical profile of this patient includes unusual sites of metastasis at the time of recurrence. Despite the finding that soft-tissue comprises approximately 55% of our body mass, hematogenous metastases to these areas are rare. Direct extension of a primary tumor to soft-tissue is a much more common event than distant soft-tissue metastases.^[7] Autopsy studies have also addressed the incidence of secondary malignancies involving soft-tissue sites. One of the large autopsy series concluded that secondary tumors were actually much more common than primary malignant tumors of soft-tissue.^[8] Plaza *et al.* analyzed total 118 cases of soft-tissue metastasis, in 27.11% of cases the metastasis to soft-tissue was the initial manifestation of the disease leading to the subsequent identification of the primary tumor elsewhere. Most commonly reported malignancies resulting in distant soft-tissue metastases are lung, kidney, and colon carcinoma. Whereas, only one of 118 cases had testicular cancer as primary.^[7] Six patients with primary testicular malignancy have been described in literature with soft-tissue metastasis.^[7-10] Four had seminoma histology with most common sites of deposits in the abdominal wall, back, thigh, chest, and shoulder. In all the four patients, these metastases were present at the time of recurrence. This is the first report where PMS had metastasis at soft-tissue, also cheek as the site of metastasis has never been described before in association with PMS.^[11]

The other unusual site of metastasis in this patient was bone. Until now, only three patients of PMS with bone metastasis at presentation have been described in the literature.^[1,6] None of the cases developed bone metastasis at recurrence. Hence soft-tissue and bone metastasis together at relapse in PMS with a short disease free interval is a rare previously unreported clinical entity. The early relapse and unusual site of metastasis suggests aggressive histology. The metastasis at both sites were unresponsive to radiotherapy is also quite unusual for seminomas.

The 5-10% of all seminomas is anaplastic histology associated with increased frequency of metastasis and locally advanced stage. Although 30% of patients who die from seminoma have anaplastic morphology but stage-to-

stage, treatment outcomes for patients with classic versus anaplastic seminoma have been similar.^[12] The expression of genes (dopamine receptor D1 and family with sequence similarity 71, member F2 (FAM71F2) and microsatellite instability have been associated with chemoresistance and increased metastatic seminoma.^[13,14] However, whether the PMS have the similar genes pre-disposing to chemoresistance and aggressive spread to unusual sites is unknown. The present case indicates that such patients are prone for early relapse and routine follow-up strategies like serum markers and conventional CT scans at a regular interval may be inadequate. Treatment strategies like Imatinib in metastatic seminoma and other targeted agents have recently shown promise.^[15]

To summarize this is a rare case of PMS with earlier age of presentation with features of SVCO. The poor response to platinum based chemotherapy is uncommon and a poor prognostic marker although there was a complete “metabolic and biochemical response” post-chemo-radiotherapy. However, this was followed by an early relapse with unusual sites of metastasis. PMS is a rare tumor and aggressive variants are even rarer. Genetic markers predisposing to aggressive behavior, chemo/radio resistance, early relapse, and unusual sites of metastasis should be identified. Such patients although rare must be identified for improved treatment modalities and follow-up strategies to detect recurrences and metastasis early.

REFERENCES

1. Bokemeyer C, Nichols CR, Droz JP, Schmoll HJ, Horwich A, Gerl A, *et al.* Extragonadal germ cell tumors of the mediastinum and retroperitoneum: Results from an international analysis. *J Clin Oncol* 2002;20:1864-73.
2. Gilligan TD, Seidenfeld J, Basch EM, Einhorn LH, Fancher T, Smith DC, *et al.* American Society of Clinical Oncology Clinical Practice Guideline on uses of serum tumor markers in adult males with germ cell tumors. *J Clin Oncol* 2010;28:3388-404.
3. Bachner M, Loriot Y, Gross-Goupil M, Zucali PA, Horwich A, Germa-Lluch JR, *et al.* 2-¹⁸F-fluoro-deoxy-D-glucose positron emission tomography (FDG-PET) for postchemotherapy seminoma residual lesions: A retrospective validation of the SEMPET trial. *Ann Oncol* 2012;23:59-64.
4. Müller J, Schrader AJ, Jentzmik F, Schrader M. Assessment of residual tumours after systemic treatment of metastatic seminoma: ¹⁸F-2-fluoro-2-deoxy-D-glucose positron emission tomography – Meta-analysis of diagnostic value. *Urologe A* 2011;50:322-7.
5. Iwasa S, Ando M, Ono M, Hirata T, Yunokawa M, Nakano E, *et al.* Relapse with malignant transformation after chemotherapy for primary mediastinal seminoma: Case report. *Jpn J Clin Oncol* 2009;39:456-9.
6. Rodney AJ, Tannir NM, Siefker-Radtke AO, Liu P, Walsh GL, Millikan RE, *et al.* Survival outcomes for men with mediastinal germ-cell tumors: The University of Texas M. D. Anderson Cancer Center experience. *Urol Oncol* 2012;30:879-85.
7. Plaza JA, Perez-Montiel D, Mayerson J, Morrison C, Suster S. Metastases to soft tissue: A review of 118 cases over a 30-year period. *Cancer* 2008;112:193-203.

8. Rotterdam H, Slavutin L. Secondary tumors of soft tissues: An autopsy study. In: Fenoglio C, editor. *Progress in Surgical Pathology*. Vol. 3. New York: Masson; 1981. p. 147-70.
9. Bilici A, Ustaalioglu BB, Seker M, Kayahan S. Case report: Soft tissue metastasis from immature teratoma of the testis: Second case report and review of the literature. *Clin Orthop Relat Res* 2010;468:2541-4.
10. Byun JC, Choi IJ, Han MS, Lee SC, Roh MS, Cha MS. Soft tissue metastasis of an immature teratoma of the ovary. *J Obstet Gynaecol Res* 2011;37:1689-93.
11. Zohar Y, Ben-Tovim R, Gal R, Laurian N. Metastatic carcinoma of oral soft tissue. *Head Neck Surg* 1985;7:484-6.
12. Ruf CG, Linbecker M, Port M, Riecke A, Schmelz HU, Wagner W, *et al.* Predicting metastasized seminoma using gene expression. *BJU Int* 2012;110:E14-20.
13. Honecker F, Wermann H, Mayer F, Gillis AJ, Stoop H, van Gorp RJ, *et al.* Microsatellite instability, mismatch repair deficiency, and BRAF mutation in treatment-resistant germ cell tumors. *J Clin Oncol* 2009;27:2129-36.
14. Pectasides D, Nikolaou M, Pectasides E, Koumariou A, Valavanis C, Economopoulos T. Complete response after imatinib mesylate administration in a patient with chemoresistant stage IV seminoma. *Anticancer Res* 2008;28:2317-20.
15. Braquet P, Chapelle A, Jorgensen C, Pers YM. Unusual seminoma revealed by bone metastasis. *Joint Bone Spine* 2011;78:644-5.

How to cite this article: Nachankar A, Krishnatry R, Joshi A, Noronha V, Agarwal JP. Primary mediastinal seminoma; resistance and relapse: An aggressive entity. *Indian J Med Paediatr Oncol* 2013;34:309-12.

Source of Support: Nil, **Conflict of Interest:** None declared.

"Quick Response Code" link for full text articles

The journal issue has a unique new feature for reaching to the journal's website without typing a single letter. Each article on its first page has a "Quick Response Code". Using any mobile or other hand-held device with camera and GPRS/other internet source, one can reach to the full text of that particular article on the journal's website. Start a QR-code reading software (see list of free applications from <http://tinyurl.com/yzlh2tc>) and point the camera to the QR-code printed in the journal. It will automatically take you to the HTML full text of that article. One can also use a desktop or laptop with web camera for similar functionality. See <http://tinyurl.com/2bw7fn3> or <http://tinyurl.com/3ysr3me> for the free applications.