

Hormone receptor status (estrogen receptor, progesterone receptor), human epidermal growth factor-2 and p53 in South Indian breast cancer patients: A tertiary care center experience

Rashmi Patnayak,
Amitabh Jena¹, Nandyala
Rukmangadha, Amit Kumar
Chowhan, K. Sambasivaiah²,
Bobbitt Venkatesh Phaneendra,
Mandyam Kumaraswamy Reddy

Departments of Pathology,
¹Surgical Oncology and ²Medical
Oncology, Sri Venkateswar Institute
of Medical Sciences, Tirupati,
Andhra Pradesh, India

Address for correspondence:

Dr. Rashmi Patnayak,
Department of Pathology, Sri
Venkateswar Institute of Medical
Sciences, Tirupati - 517 507,
Andhra Pradesh, India.
E-mail: rashmipatnayak2002@
yahoo.co.in

ABSTRACT

Breast cancer, in India, is the second commonest cancer in females. Receptor status with ER/PR/Her 2 is now routinely done in patients with invasive carcinoma. The tumour suppressor gene, p53, is also present in most breast cancers. Proteins produced by a mutated p53 gene, accumulate in the nucleus of tumour cells and are detected by immunohistochemistry (IHC). We have undertaken this study with the aim to evaluate the ER, PR, HER-2 and p53 expressions in invasive breast carcinomas by IHC and to compare the HER-2 expression with various clinicopathological parameters.

Materials and Methods: In this retrospective single institutional study from January 2001 to December 2010, 389 cases of histopathologically diagnosed infiltrating carcinoma of breast were evaluated taking into account various parameters like age, tumour size, grade, lymph node involvement, ER and PR. HER-2 and p53 was done in 352 cases. **Results:** The age range was 23-90 years with a mean of 50.7 years. Majority of tumours were T2 (79.6%) and Grade II (60.9%). Our data showed overall 47.6% ER, 48.8% PR, 29.6% HER-2 and 69.2% p53 positivity. There was no significant correlation between HER-2 and age, tumour size, lymph node status, ER, and PR. There was significant correlation between HER-2 and tumour grade ($P = 0.031$), p53 ($P < 0.001$). There was no inverse correlation between HER-2 and combined ER, PR status. Triple-negative breast cancers which constituted 22.7% of our cases did not reveal any correlation with various parameters. **Conclusion:** In our study, ER status was low, and incidence of p53 was high. These findings suggest that many of the tumours in Indian females may be of an aggressive type, and novel treatment approaches may be tried. We conclude that the assessment of all four markers is desirable.

Key words: Breast cancer, estrogen receptor, human epidermal growth factor receptor-2, immunohistochemistry, p53, progesterone receptor

INTRODUCTION

Breast cancer is the most common malignancy among women in the western world and in India second only to the carcinoma cervix.^[1] Worldwide, breast carcinoma remains a major concern as a leading cause of death. Early and accurate diagnosis remains the most important determinant in the treatment and outcome.

It has long been recognized that some human breast cancers are hormone-dependent. Estrogen regulates the differentiation and proliferation of breast epithelial cells and interacts with the estrogen receptor (ER) in the nucleus. Prolonged exposure of estrogen is an important risk factor for cancer. Progesterone receptor (PR) expression in normal breast epithelium is regulated by ER.^[2] Presence of ER, PR and human epidermal growth factor receptor-2 (HER-2) status in invasive breast carcinoma is now-a-days routinely estimated as these markers are considered to be important prognostic factors.^[3] ER and PR status has been used for many years to determine a patient's suitability for endocrine therapy (tamoxifen). HER-2 encodes a membrane protein that is tyrosine phosphorylated after interaction with its ligands. HER-2 is helpful in predicting the response to trastuzumab.^[4] Nearly one-third of breast

Access this article online

Quick Response Code:



Website:
www.ijmpo.org

DOI:
10.4103/0971-5851.158844

cancers have mutations in the p53, a tumour suppressor gene. Tumours with mutant p53 are associated with high histological grade and clinical aggressiveness.^[5] Literature suggests that over-expression of HER-2 and p53 may have an adverse effect in breast cancer.^[6,7]

MATERIALS AND METHODS

In this retrospective study from January 2001 to December 2010 in a single institution from south India, there were 408 cases of invasive breast carcinomas. These 408 cases of breast carcinoma patients underwent primary surgery at the center during this period. They did not receive any prior chemotherapy, radiotherapy or hormone therapy. One hundred and seventy-one cases underwent surgery elsewhere and came for an opinion. We have not included these cases in the study as the fixation status of the sample was not known. In the present study, 389 cases of infiltrating duct cell carcinoma not otherwise specified (nos) diagnosed histopathologically were included. We excluded breast carcinoma cases from other health care centers, where paraffin blocks of were received only for review and immunohistochemical analysis, with unknown fixation status. Postchemotherapy patients, *in situ* carcinomas and patients with incomplete information, were also excluded. The in-house specimens (modified radical mastectomy, lumpectomy, excisional biopsy, trucut) were fixed by 10% formalin prior to the year 2006 and 10% neutral buffered formalin after that period. The histopathology reports were accessed from the computerized hospital information system. We have taken into account the age, sex. There were 13 male patients with invasive ductal carcinoma, type of specimen and modified Scarf Bloom Richardson grade.^[8]

Estrogen receptor, PR, HER-2, and p53 immunostain was done with both positive and negative controls. Tests were repeated whenever required. Immunostain for ER, PR, HER-2/neu, p53 was done on three-micron paraffin sections on 3-amino propyl ethoxy silane coated slides, with known positive controls as per manufacturer's instruction. Immunohistochemistry (IHC) was done by polymer horse radish peroxidase IHC detection system. Primary antibody used was monoclonal mouse antihuman antibody (ER-clone 1D5 in a dilution of 1:200, PR-clone PR 88 in a dilution of 1:200, HER-2/neu [c-erbB-2] clone CB11 in a dilution of 1:100, p53 clone D07 in a dilution of 1:1000). All the markers were from BioGenex. Antibodies from DAKO Company, Glostrup, Denmark were used prior to the year 2006. Antigen retrieval was done by pressure cooking for 5-10 min in Tris ethylenediaminetetraacetic acid buffer, pH 9.0 since the year 2006. Prior to this antigen retrieval was done by microwave based technique.

The slides were stained with 3, 3'-diaminobenzidine tetra hydrochloride chromogen, counterstained with Hematoxylin and mounted.

Nuclear staining was assessed for ER, PR, p53 and membrane staining was assessed for HER-2.

The intensity and proportion of tumour cells stained for ER and PR-were assessed by quick score system.^[9,10] The normal epithelial elements served as an internal control.

Human epidermal growth factor-2 expression was determined based on the membrane staining pattern and scored on a scale of 0-3⁺ as recommended by the American Society of Clinical Oncology (ASCO) guidelines.^[11] Scores of 0 and 1⁺ were considered negative for HER-2 protein expression. Tumours with scores of two or greater as positive for HER-2 over-expression were scored as positive for statistical consideration. The expression status of p53 was assessed according to the estimated proportion of nuclear staining of tumour cells that were positively stained. Tumours with 10% or greater nuclear positivity were considered to be positive for p53 protein accumulation.^[5] For each case, 500 cells were counted; 200 cells in trucut biopsies [Figure].

The data obtained was analyzed using the Statistical Package for the Social Sciences version 11.5 statistical program (SPSS Inc, Chicago). The institutional ethics board gave approval for the study.

RESULTS

The age range was wide (23-90 years) with a mean age of 50.7 ± 11.5 years. Maximum numbers of patients were over 50 years. Infiltrating duct cell carcinoma (nos) was the most common type ($n = 389$) followed by infiltrating

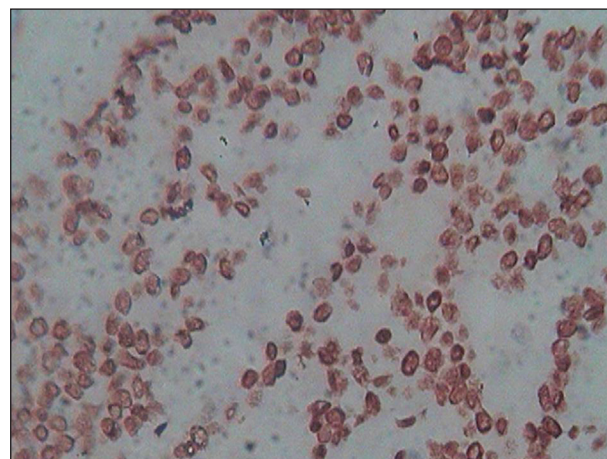


Figure: Infiltrating duct cell carcinoma of the breast (not otherwise specified) with nuclear staining for p53 (immunohistochemistry, x40)

lobular carcinoma. Other variants encountered include colloid, papillary, metaplastic and adenoid cystic carcinoma.

Tumour size was available in 201 cases, out of which majority 160 (79.6%) belonged to T2 size (2-5 cm).

Using modified Scarf Bloom Richardson's grading majority 237 (60.9%) were Grade II followed by Grade III 137 (35.2%).^[8]

Histopathological status of lymphnodes was available in 211 cases. Of these 138 (65.4%) showed metastatic deposits.

Our data showed overall 47.6% ER, 48.8% PR, 29.6% HER-2 and 69.2% p53 positivity [Table 1]. ER + PR + cases were 139 (35.7%), ER + PR-were 46 (11.8%), ER-PR + were 51 (13.1%) and ER-PR-was 152 (39.1%).

Pearson Chi-square test did not reveal any significant correlation between HER-2 and parameters like age, tumour size, lymph node status, ER, and PR. But, there was a significant correlation between HER-2 and tumour grade ($P = 0.031$), p53 ($P < 0.001$) and combined ER, PR status ($P = 0.003$).

Triple negative cancers, where all three of the receptors (ER, PR, and HER-2) are negative, constituted 22.7%. There was no significant correlation between above-mentioned parameters and triple negative cases in this study.

DISCUSSION

There is definite evidence that the incidence of breast cancer in India is on the rise.^[1] Several risk factors for the development of the breast carcinoma have been established. The common denominator for most of the factors is prolonged estrogen stimulation operating on a genetically susceptible background.^[2]

Presence of ER and PR in invasive carcinoma correlates positively with survival and is an important prognostic factor. The determination of ER, PR and HER-2 in breast cancer has become part of the standard workup.^[3]

In this study, majority of patients (47.8%) were postmenopausal, over 50 years of age. Patients <35 years constituted 6.4% of total. This finding also has been previously reported by other Indian studies.^[3,12] These studies state that compared to their western counterparts, the mean age of Indian breast cancer patients are lower.^[3] Age was determined as recorded in the clinical case records and pathology requisition. Patients' age did not reveal any significant correlation with HER-2 in this

Table 1: Data on clinical, histological, pathological and receptor status in breast carcinomas — number (%)

Parameters	Number (%)
Age (years)	
<35	25 (6.4)
35-49	178 (45.8)
≥50	186 (47.8)
Size (cm)	
<2	19 (9.4)
2-5	160 (79.6)
>5	22 (10.9)
Histology	
Grade I	15 (3.9)
Grade II	237 (60.9)
Grade III	137 (35.2)
Lymph node involvement	
Node positive	138 (65.4)
Node negative	73 (34.5)
Information not available/no node excised	178
ER	
Negative	204 (52.4)
Positive	185 (47.6)
PR	
Negative	199 (51.2)
Positive	190 (48.8)
Combined hormone receptor sensitivity	
ER+PR+	139 (35.7)
ER+PR-	46 (11.8)
ER-PR+	51 (13.1)
ER-PR-	152 (39.1)
HER-2	
Negative	237 (60.9)
Positive	115 (29.6)
NA	37 (9.5)
p53	
Negative	83 (21.3)
Positive	269 (69.2)
NA	37 (9.5)

ER – estrogen receptor; PR – progesterone receptor; NA – Not available;
HER-2 – Human epidermal growth factor-2

study ($P = 0.613$). Similar findings have been reported by other Indian studies.^[13,14]

Lymph nodal status was available in 211 patients. Metastatic lymphnodes were noted in 138 (65.4%) cases. No significant correlation was noted between HER-2 and lymph nodal status ($P = 0.383$). This finding is in contrast to that noted by Vaidyanathan *et al.*^[13]

Tumour size was available in 201 cases. Majority of tumours, 160 (79.6%) belonged to T2 category size (2-5 cm). There was no significant correlation between HER-2 status and tumour size ($P = 0.241$). This finding is similar

to that noted by Ambroise *et al.*^[3] Primary surgery was done in 408 patients. These patients did not receive any prior chemo/radio/hormonal therapy. However, Vaidyanathan *et al.* and Kumar *et al.* reported a positive correlation.^[13,14]

The proportion of stained cells, Allred score, quick score and H score are the most commonly used methods to assess the hormone receptor status.^[9,10] We used the quick score system to determine the extent and intensity of receptor status. A cut-off point corresponding to 10% of the stained cells was used to identify hormone receptor-positive tumours in various studies emphasizing the significant association between the proportion of cells stained and the response to endocrine therapy.^[3,12,14-17] A quick score above two (above 1% of weakly positive cells) has been reported to predict responsiveness to endocrine treatment.^[15-17] In 2001, a consensus development panel of US National Institute of Health purposed that any nuclear positivity should consider as positive for ER status so that the patient can avail endocrine therapy.^[16]

We noted an overall 47.6% of ER and 48.8% PR positivity. The prevalence of hormone receptor-positive breast cancer in Asian countries has been found to be lower than the western world. Western studies have reported 70-80% ER and 60-70% PR expression in the case of invasive ductal carcinoma, respectively.^[3,15,17,18] However, studies from India have documented lower positivity for both the receptors. Desai *et al.* from India have documented the prevalence of 32.6% for ER-positive and 46.1% for PR-positive breast cancers.^[19] A recent study from Mumbai also showed that hormone receptor expression in India is lower compared to the west.^[20]

The study by Munjal *et al.* has also revealed a lower figure.^[12] Dutta *et al.* have reported overall 24% ER and 30% PR positivity in their article. The explanations of this lower positivity as given by the authors include parameters like difference in techniques of evaluation, high tumour grade, and postmenopausal females.^[21]

Ambroise *et al.* in their study from South India have showed that 59% ER positivity and 51% PR positivity respectively.^[3] Similarly, Mudduwa, in a study from Srilanka documented a prevalence of 45.7% ER-positive and 48.3% PR-positive tumours.^[9]

The percentage of tumours expressing PR but not ER- was 13.1% in our study. This is higher in contrast to other Indian studies by Shet *et al.* and Ambroise *et al.*, who have reported 3.4% and 4.05% for this category.^[3,20] However in another Indian study by Kumar *et al.* ER negative and PR-positive tumours were 13.3%.^[14]

Since its initial discovery, HER-2 was used as a therapeutic target because of the efficacy of trastuzumab, a recombinant humanized monoclonal antibody that binds with high affinity to HER-2, in advanced breast cancer.^[4] Over-expression of HER-2 occurs through either amplification of the gene or mRNA over-expression. One study from north India had shown HER-2/neu oncogene over-expression is higher (46.37%) among Indian patients in comparison to 25-30% shown in most western literature.^[14,15]

In this study HER-2 positivity was 29.6%. Our findings are similar to that noted by Ambroise *et al.* (27.10%).^[3] It did not exhibit any correlation with ER and PR individually. However, there was a significant correlation between combined ER, PR status and HER-2 ($P = 0.003$). This is in contrast to Kumar *et al.* findings where a significant correlation between has been described between ER, PR receptor status and HER-2 over-expression^[14] Ambroise *et al.* also could not describe an inverse relationship between HER-2 and ER, PR expression similar to this study.^[3] Vaidyanathan *et al.* have noted 43.2% HER-2 positivity by IHC. This is quite high compared to western literature. They also found a significant correlation between ErbB-2 status and lymphnode status, tumour size and ductal carcinoma.^[13]

Indian studies show considerable variation regarding the frequency of HER-2 positivity. Vaidyanathan *et al.* noted 43.2% HER-2 positivity by IHC and 25.5% by genomic polymerase chain reaction.^[13] Whereas James *et al.* have documented 29% HER-2/neu positivity by IHC.^[22] A study from Central India has found 40.2% of tumours to be HER-2/neu positive.^[12] Another study from Varanasi revealed it to be 46.3%^[21] [Table 2].

We have included those cases that were immunohistochemically 2⁺ or 3⁺ according to ASCO guidelines as HER-2 positive cases. The equivocal 2⁺ cases we have included under HER-2 positive cases for statistical purpose. We have not performed fluorescence *in situ* hybridization (FISH) in these cases.

Table 2: Receptor status in various study groups from India

Different study group from India	ER %	PR %	HER-2 positivity by IHC %	p53 %
Desai <i>et al.</i> ^[19]	32.6	46.1	—	—
Dutta <i>et al.</i> ^[21]	24	30	46.3	—
Ambroise <i>et al.</i> ^[3]	59	51	27.10	—
Vaidyanathan <i>et al.</i> ^[13]	50.2	46.9	43.2	—
James <i>et al.</i> ^[22]	—	—	29.0	—
Munjal <i>et al.</i> ^[12]	41.1	41.1	40.2	—
This study	47.6	48.8	29.6	69.2

ER – Estrogen receptor; PR – Progesterone receptor; IHC – Immunohistochemistry; HER-2 – Human epidermal growth factor-2

We agree with Ambroise *et al.* regarding the fact that the frequency of HER-2 positivity may change if we take into account only the positive cases detected by FISH analysis. Again according to Vogel, though using the novel ASCO/College of American Pathologists criteria for assessing immunohistochemical results in HER-2 testing helps to reduce the IHC false positive rate of HER-2, in heterogeneous carcinomas, even FISH may not succeed in a correct evaluation of HER-2. However, FISH remains the gold standard for assessment of HER-2 status.^[23]

Accordingly, in a recent article from south India the authors have opined that IHC HER-2 equivocal (2⁺) cases are a heterogeneous group and FISH is helpful in categorizing these tumours.^[24]

Another marker that we have included in our study is p53, a tumour suppressor gene, which is located on the short arm of chromosome 17. P53 is involved in regulating cell proliferation, inducing apoptosis, and in promoting chromosomal stability. Disruption of these functions appears to play an important role in carcinogenesis. P53 over-expression has been observed in 20-50% of primary breast tumours.^[5] Because proteins produced by a mutated p53 gene are not degraded as quickly as the wild-type protein, p53 proteins tend to accumulate in the nucleus of tumour cells, and can be detected by IHC.^[5]

In view of the recent available literature, that the mutant p53 can be targeted; assessment of p53 has assumed significance.^[25,26]

There is also evidence from the literature that, coexistence of over-expression of HER-2 and p53 protein accumulation is a strong prognostic marker in breast cancer.^[25-27]

Lee *et al.* have noted 37.1% p53 over-expression in their study.^[5] In our data, we noted 69.2% p53 positivity. We also noted significant positive correlation between HER-2 and p53 ($P < 0.001$).

Triple-negative breast cancers (TNBCs) have recently attracted a lot of attention, because of their poor prognosis. TNBCs is frequently shown to harbor mutations in Tp53, resulting in loss of the G1 checkpoint and reliance on checkpoint kinase-1 to arrest cells in response to DNA damage. We encountered 22.7% triple negative cases, but statistically there was no significant correlation between various parameters including p53 with TNBC.

Definitely, further studies are required in larger groups taking into account various clinical parameters along with molecular study and survival pattern analysis to substantiate these immunohistochemical findings. All these factors may

point to the fact that in the sub continental women, there is relatively low-expression of ER and high-expression of HER-2 and p53 (in resected tumours). This may be attributed to the aggressive form of the disease and racial differences.

ACKNOWLEDGMENTS

The authors wish to thank Dr. Aparna Bitla for her invaluable help and senior technicians Mrs. Ushanandini and Mr. Ramana for their help.

REFERENCES

1. National Cancer Registry Programme, Indian Council of Medical Research. Leading sites of cancer. In: Consolidated Report of Population Based Cancer Registries 2001-2004, Incidence and Distribution of Cancer. Bangalore: Coordinating Unit, National Cancer Registry Programme (ICMR); 2006. p. 8-30.
2. Jensen EV. Steroid receptors in breast cancer: Historical perspective. *Cancer* 1980;46:2759-61.
3. Ambroise M, Ghosh M, Mallikarjuna VS, Kurian A. Immunohistochemical profile of breast cancer patients at a tertiary care hospital in South India. *Asian Pac J Cancer Prev* 2011;12:625-9.
4. Gupta S. Breast cancer in India: A continuing challenge. *Indian J Cancer* 2010;47:1-2.
5. Lee DS, Kim SH, Suh YJ, Kim S, Kim HK, Shim BY. Clinical implication of p53 overexpression in breast cancer patients younger than 50 years with a triple-negative subtype who undergo a modified radical mastectomy. *Jpn J Clin Oncol* 2011;41:854-66.
6. Yamashita H, Nishio M, Toyama T, Sugiura H, Zhang Z, Kobayashi S, *et al.* Coexistence of HER2 over-expression and p53 protein accumulation is a strong prognostic molecular marker in breast cancer. *Breast Cancer Res* 2004;6:R24-30.
7. Nakopoulou LL, Alexiadou A, Theodoropoulos GE, Lazaris AC, Tzonou A, Karamopoulos A. Prognostic significance of the co-expression of p53 and c-erbB-2 proteins in breast cancer. *J Pathol* 1996;179:31-8.
8. Elston CW, Ellis IO. Pathological prognostic factors in breast cancer. I. The value of histological grade in breast cancer: Experience from a large study with long-term follow-up. *Histopathology* 1991;19:403-10.
9. Mudduwa LK. Quick score of hormone receptor status of breast carcinoma: Correlation with the other clinicopathological prognostic parameters. *Indian J Pathol Microbiol* 2009;52:159-63.
10. Wells CA, Sloane JP, Coleman D, Munt C, Amendoeira I, Apostolikas N, *et al.* Consistency of staining and reporting of oestrogen receptor immunocytochemistry within the European Union – an inter-laboratory study. *Virchows Arch* 2004;445:119-28.
11. Wolff AC, Hammond EH, Schwartz JN, Hagerty KL, Allred DC, Cote RJ, *et al.* American Society of Clinical Oncology/College of American Pathologists guideline recommendation for human epidermal growth factor receptor 2 testing in breast cancer. *J Clin Oncol* 2007;25:118-45.
12. Munjal K, Ambaye A, Evans MF, Mitchell J, Nandedkar S, Cooper K. Immunohistochemical analysis of ER, PR, Her2 and CK5/6 in infiltrative breast carcinomas in Indian patients. *Asian Pac J Cancer Prev* 2009;10:773-8.
13. Vaidyanathan K, Kumar P, Reddy CO, Deshmane V, Somasundaram K, Mukherjee G. ErbB-2 expression and its

- association with other biological parameters of breast cancer among Indian women. *Indian J Cancer* 2010;47:8-15.
14. Kumar V, Tewari M, Singh U, Shukla HS. Significance of Her-2/neu protein over expression in Indian breast cancer patients. *Indian J Surg* 2007;69:122-8.
 15. Li CI, Daling JR, Malone KE. Incidence of invasive breast cancer by hormone receptor status from 1992 to 1998. *J Clin Oncol* 2003;21:28-34.
 16. Eifel P, Axelson JA, Costa J, Crowley J, Curran WJ Jr, Deshler A, *et al.* National institutes of health consensus development conference statement: Adjuvant therapy for breast cancer, November 1-3, 2000. *J Natl Cancer Inst* 2001;93:979-89.
 17. Horii R, Akiyama F, Ito Y, Iwase T. Assessment of hormone receptor status in breast cancer. *Pathol Int* 2007;57:784-90.
 18. Jirstrom K, Ryden L, Anagnostaki L, Nordenskjöld B, Stål O, Thorstenson S, *et al.* Pathology parameters and adjuvant tamoxifen response in a randomised premenopausal breast cancer trial. *J Clin Pathol* 2005;58:1135-42.
 19. Desai SB, Moonim MT, Gill AK, Punia RS, Naresh KN, Chinoy RF. Hormone receptor status of breast cancer in India: A study of 798 tumours. *Breast* 2000;9:267-70.
 20. Shet T, Agrawal A, Nadkarni M, Palkar M, Havaladar R, Parmar V, *et al.* Hormone receptors over the last 8 years in a cancer referral center in India: What was and what is? *Indian J Pathol Microbiol* 2009;52:171-4.
 21. Dutta V, Chopra GS, Sahai K, Nema SK. Hormone receptors, Her-2/neu and chromosomal aberrations in breast cancer. *Med J Armed Forces India* 2008;64:11-5.
 22. James R, Thriveni K, Ramaswamy G, Krishnamoorthy L, Mukherjee G, Vijayalaxmi Deshmane PP, *et al.* Evaluation of immunohistochemistry and enzyme linked immunosorbent assay for HER-2/neu expression in breast carcinoma. *Indian J Clin Biochem* 2008;23:345-51.
 23. Vogel UF. Confirmation of a low HER2 positivity rate of breast carcinomas — limitations of immunohistochemistry and *in situ* hybridization. *Diagn Pathol* 2010;5:50.
 24. Murthy SS, Sandhya DG, Ahmed F, Goud KI, Dayal M, Suseela K, *et al.* Assessment of HER2/Neu status by fluorescence *in situ* hybridization in immunohistochemistry-equivocal cases of invasive ductal carcinoma and aberrant signal patterns: A study at a tertiary cancer center. *Indian J Pathol Microbiol* 2011;54:532-8.
 25. Liang Y, Besch-Williford C, Hyder SM. PRIMA-1 inhibits growth of breast cancer cells by re-activating mutant p53 protein. *Int J Oncol* 2009;35:1015-23.
 26. Liang Y, Besch-Williford C, Benakanakere I, Thorpe PE, Hyder SM. Targeting mutant p53 protein and the tumour vasculature: An effective combination therapy for advanced breast tumours. *Breast Cancer Res Treat* 2011;125:407-20.
 27. Schoppy DW, Brown EJ. Chk'ing p53-deficient breast cancers. *J Clin Invest* 2012;122:1202-5.

How to cite this article: Patnayak R, Jena A, Rukmangadha N, Chowhan AK, Sambasivaiah K, Phaneendra BV, *et al.* Hormone receptor status (estrogen receptor, progesterone receptor), human epidermal growth factor-2 and p53 in South Indian breast cancer patients: A tertiary care center experience. *Indian J Med Paediatr Oncol* 2015;36:117-22.

Source of Support: Nil, **Conflict of Interest:** None declared.

Author Help: Online submission of the manuscripts

Articles can be submitted online from <http://www.journalonweb.com>. For online submission, the articles should be prepared in two files (first page file and article file). Images should be submitted separately.

1) First Page File:

Prepare the title page, covering letter, acknowledgement etc. using a word processor program. All information related to your identity should be included here. Use text/rtf/doc/pdf files. Do not zip the files.

2) Article File:

The main text of the article, beginning with the Abstract to References (including tables) should be in this file. Do not include any information (such as acknowledgement, your names in page headers etc.) in this file. Use text/rtf/doc/pdf files. Do not zip the files. Limit the file size to 1024 kb. Do not incorporate images in the file. If file size is large, graphs can be submitted separately as images, without their being incorporated in the article file. This will reduce the size of the file.

3) Images:

Submit good quality color images. Each image should be less than **4096 kb (4 MB)** in size. The size of the image can be reduced by decreasing the actual height and width of the images (keep up to about 6 inches and up to about 1800 x 1200 pixels). JPEG is the most suitable file format. The image quality should be good enough to judge the scientific value of the image. For the purpose of printing, always retain a good quality, high resolution image. This high resolution image should be sent to the editorial office at the time of sending a revised article.

4) Legends:

Legends for the figures/images should be included at the end of the article file.