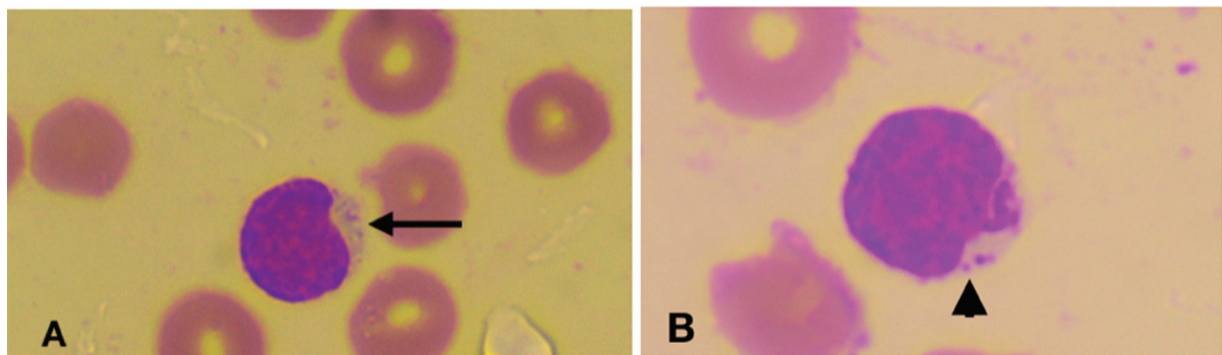
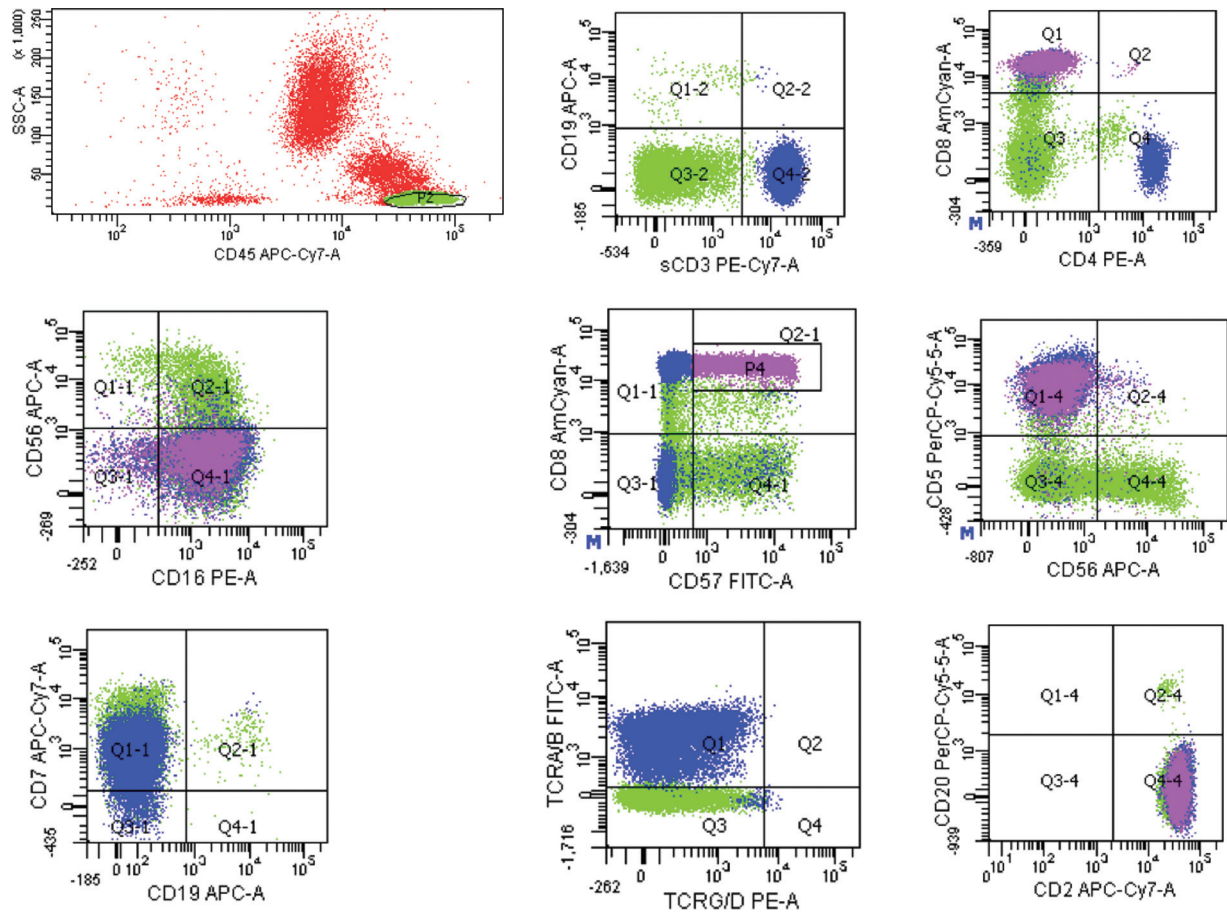


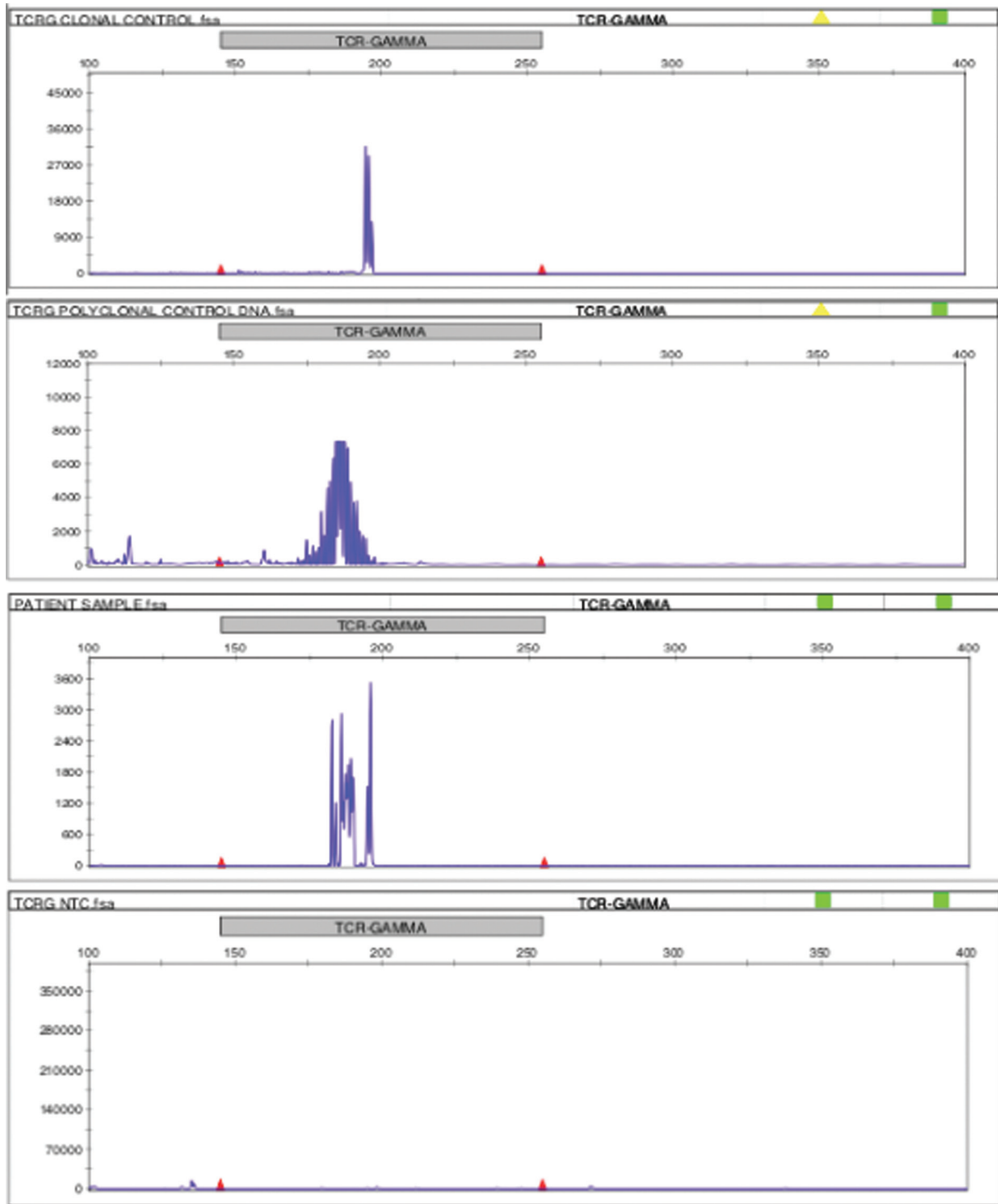
Supplementary Fig. S1 Summary of the treatments received by the patient during the treatment course of the disease. CR, complete response; PD, progressive disease; PR, partial response.



Supplementary Fig. S2 (A) Hemacytometer stain (100X) showing atypical lymphocytes (arrow) with moderate pale cytoplasm and fine to coarse azurophilic granules (B, arrowhead).



Supplementary Fig.S3 Flowcytometric analysis showed 62.3% lymphocytes (green). Of the gated lymphocytes, 60% are CD3 positive T lymphocytes (blue). The gated abnormal T lymphocytes (37%) highlighted in purple color are positive for sCD3, CD2, CD5, CD7, CD8, CD16, CD57 TCR α/β .



Supplementary Fig. S4 TCR gene rearrangement polymerase chain reaction plots: plot top shows polyclonal control; 2nd plot shows clonal control; 3rd plot shows patient sample showing multiple ($n > 3$) reproducible products ($n = 6$) suggestive of oligoclonality/ multiple clones, 4th plot shows no template control (NTC).