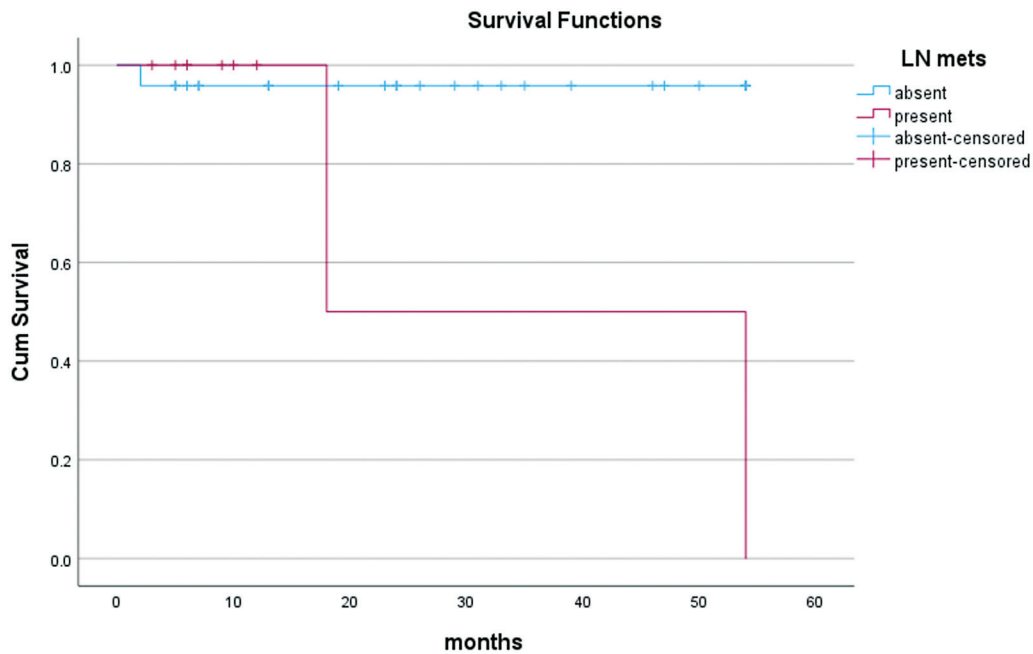


**Supplementary Table S1** Logistic regression analysis

Characteristic (A vs. B)		Univariate		Multivariate	
A	B	Odds ratio	p-Value	Odds ratio	p-Value
Size ≥ 0.5 cm	Infiltrative borders	5.320	0.010	3.797	0.070
	Fibrosis	4.333	0.045	2.136	0.368
Fibrosis	Infiltrative borders	15.400	0.001	22.432	0.009
	LN metastasis	5.571	0.011	3.781	0.165
	Size ≥ 0.5 cm	4.333	0.045	1.829	0.558
	PTFI	4307932914.270	0.999	2646391451.213	0.999
BRAF positive	PTFI	1723173165.708	0.999	1397937889.934	0.999
	Distant metastasis	8.182	0.070	3.929	0.273
	Pattern (Follicular as reference)	5.042	0.224	5.405	0.278
	Classic tall cell diffuse- sclerosing	296170.0003878.560 0	0.037 0.999 1.000	1159994913.145 0	0.050 0.999 1.000
BRAF (negative vs. positive)	Pattern <sup>a</sup> (Diffuse sclerosing as reference)			-	-
	Follicular	5.060	<0.001		
	Classic	1.004	<0.001		
	Tall-cell	6.151	-		

Abbreviations: LN, lymph node; PTFI, perithyroidal fat invasion  
<sup>a</sup>Multinomial logistic regression done.



**Supplementary Fig. S1** Kaplan–Meier survival curves for lymph node (LN) metastasis.